

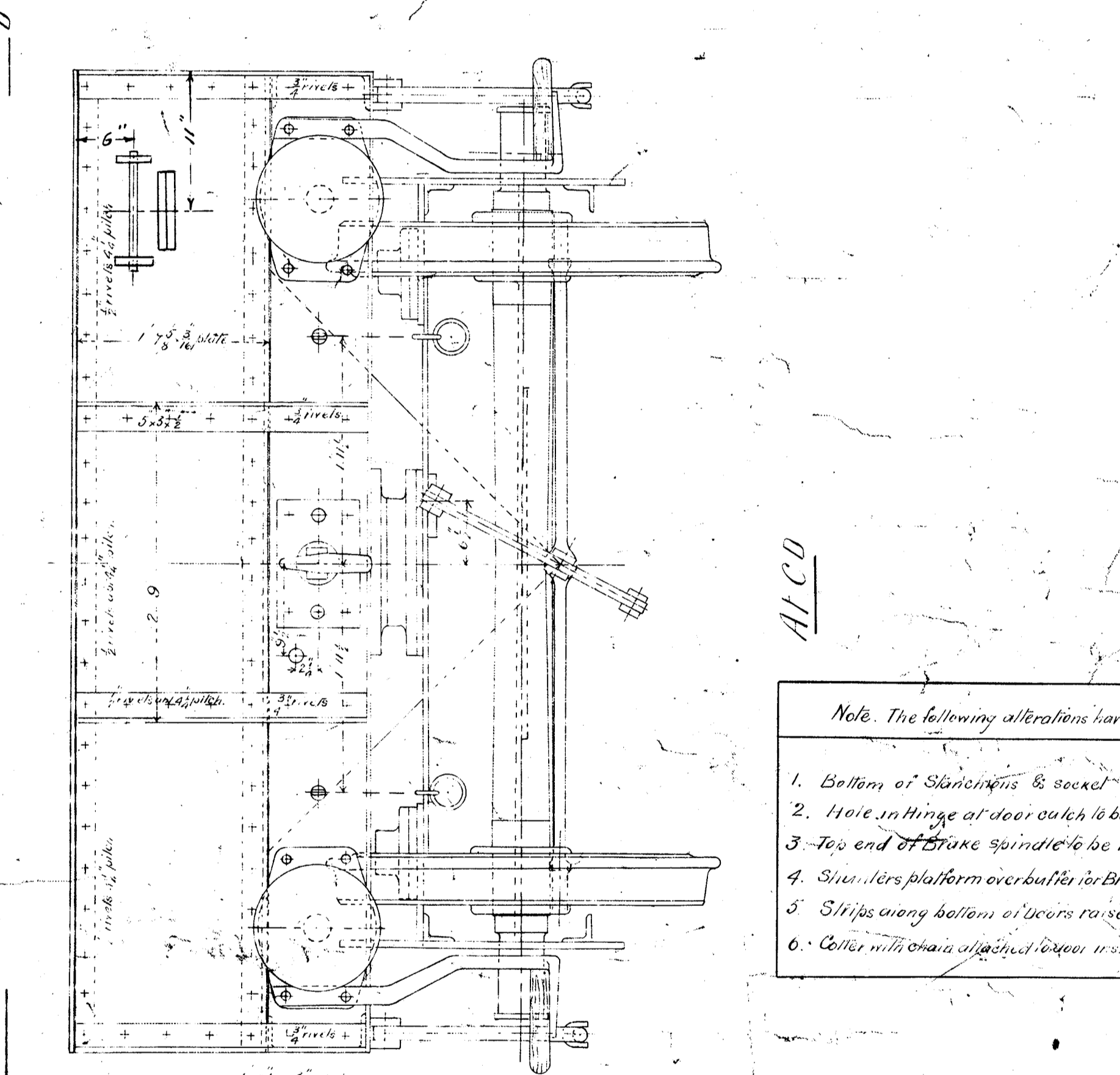
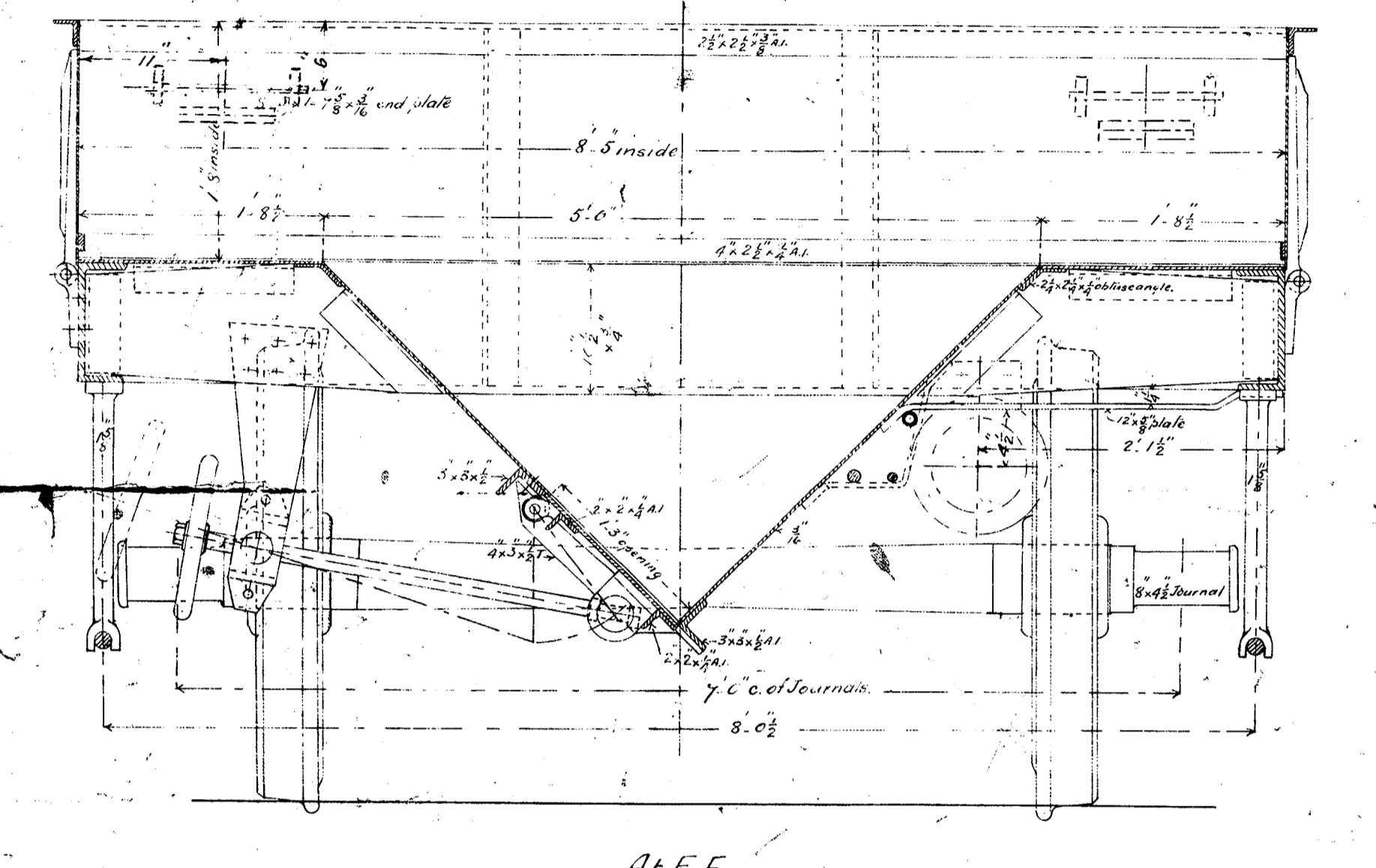
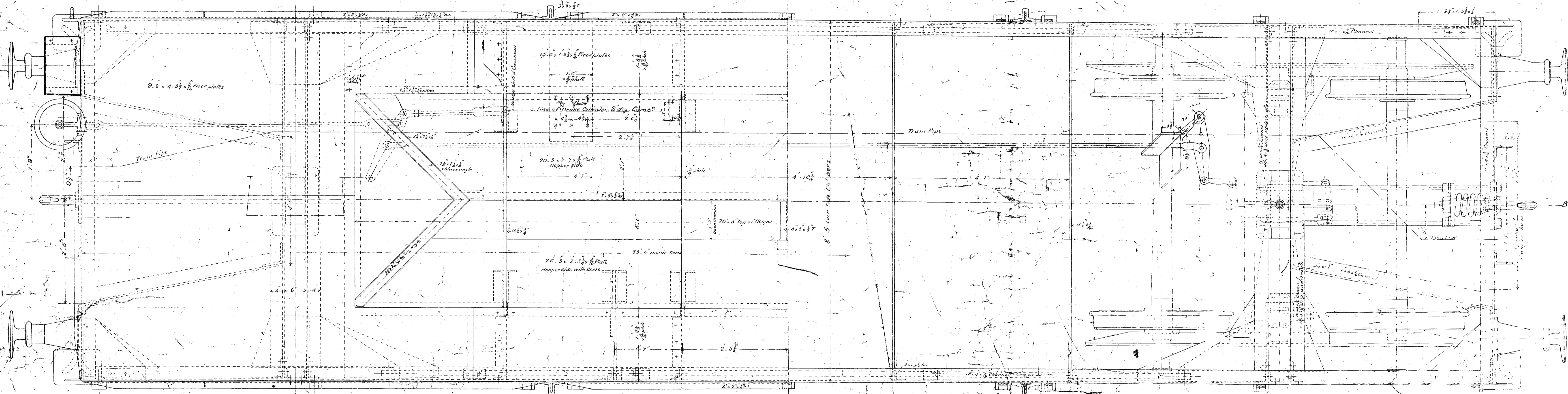
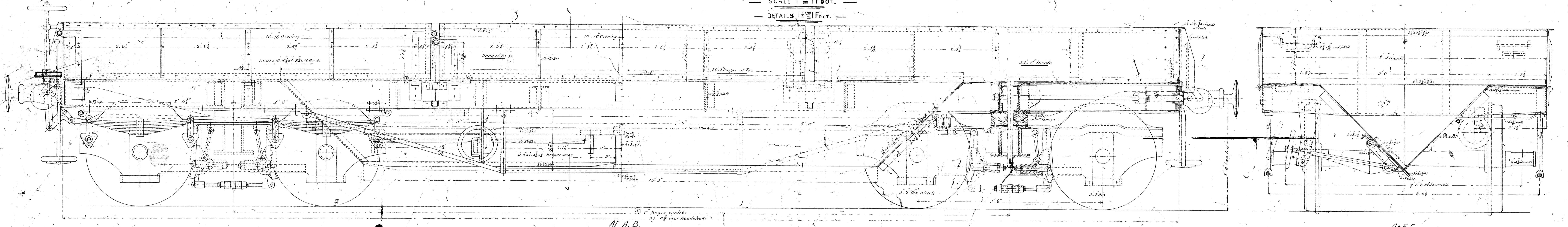
VICTORIAN RAILWAYS.

ROLLING STOCK BRANCH

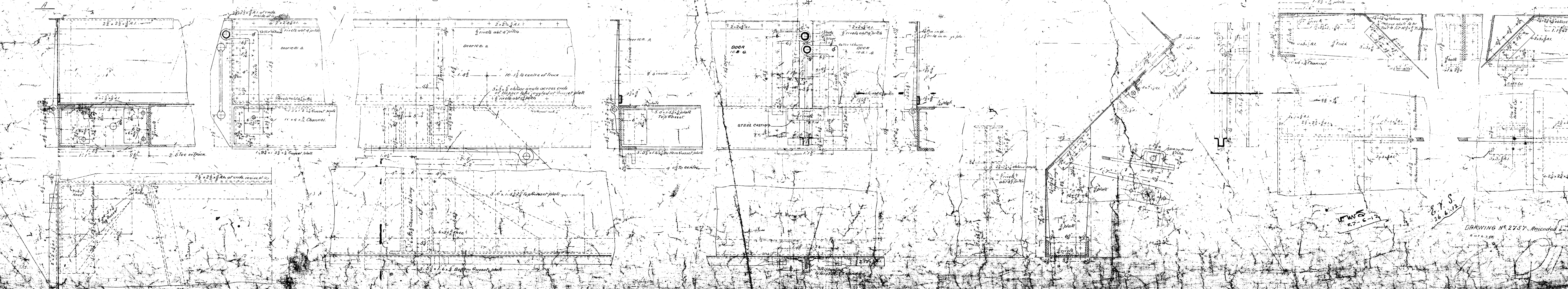
ON BOGIE BALLAST HOPPER WAGON (26 TONS)

SCALE 1" = 1 FOOT.

DETAILS 1/2" = 1 FOOT.



- Note: The following alterations have been made:
1. Bottom of Stanchions & axles
  2. Hole in hinge of door which is to be 1/2"
  3. Top end of frame stanchion to be 1/2"
  4. Stanchion platform over buffer to be 1/2" in width
  5. Strip every bottom of door to be 1/2" thick
  6. Collar with chain attached to be 1/2" in diameter



DRAWING NO. 2757. Revised 2nd time. R.H.P.